

TEST REPORT

APPLICANT : SITECOM EUROPE B.V.

ADDRESS : BLAAK 6, 3011 TA ROTTERDAM, THE NETHERLANDS

TESTED SAMPLE DESCRIPTION : POWER BANK

TESTED ITEM NO. : 12000mAh: 2PB12100DM v1 001, 2PB12100DG v1 001,
2PB12100DB v1 001, 2PB12100SP v1 001,
2PB12100DL v1 001, 2PB12100SR v1 001,
2PB12100DV v1 001, 2PB12100SG v1 001

AGE REQUESTED ON APPLICATION FORM : NOT PRESENT

SAMPLE RECEIVED DATE : 02-Jun-2022

TEST PERIOD : 06-Jun-2022 to 09-Jun-2022

The following test item(s) was/were performed on submitted sample(s) and/or component(s) confirmed by applicant

TEST REQUESTED	RESULT
RoHS Directive 2011/65/EU and its amendment Directive (EU) 2015/863.	PASS

The above sample(s) and sample information was/were submitted and identified on behalf of the applicant. Eurofins will not be liable for the authenticity of the information. This test report is valid for the tested sample only. Without permission of the test center this test report is not permitted to be duplicated in extracts. This test report does not entitle to carry any safety mark on this or similar products.

***** FOR FURTHER DETAILS, PLEASE REFER TO THE FOLLOWING PAGE(S) *****

SIGNED FOR AND ON BEHALF OF
EUROFINS TESTING TECHNOLOGY (SHENZHEN) CO., LTD.

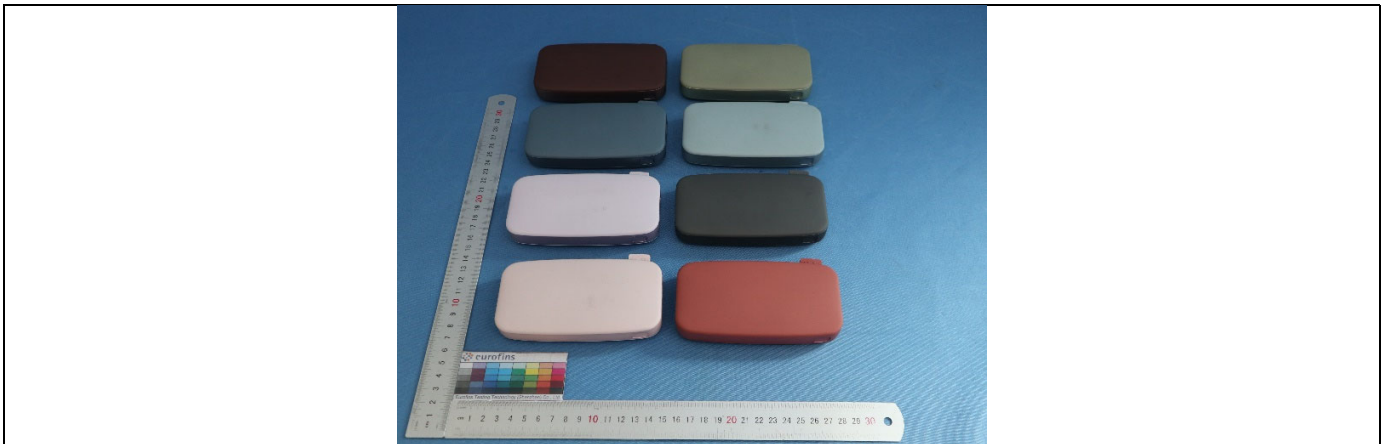


Harry Chen
Lab & Technical Support Manager

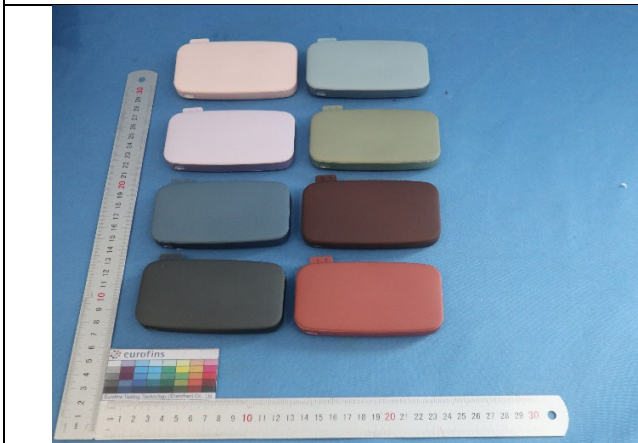


Coco Luo
Lab & Reporting Manager

SAMPLE PHOTO(S)



B



Material NO.1-26



Material NO.27-38,40



Material NO.43,44,46-56

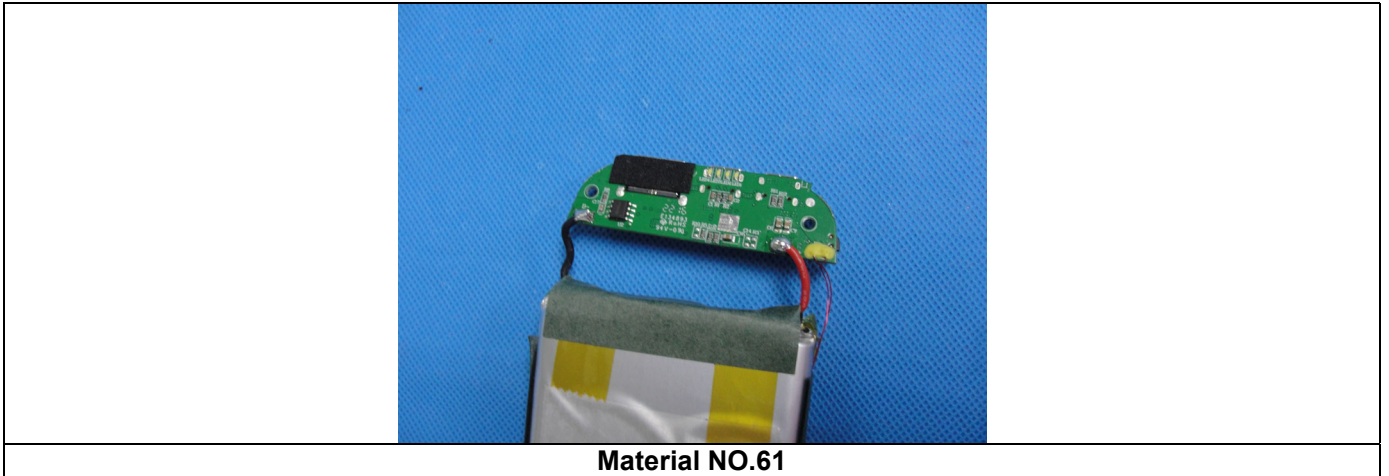


Material NO.58-60

EFSN22060130-C-0108

TO BE CONTINUED

SAMPLE PHOTO(S)



EFSN22060130-C-0108

TO BE CONTINUED

COMPONENT LIST

B 12000mAh: 2PB12100DM v1 001, 2PB12100DG v1 001, 2PB12100DB v1 001, 2PB12100SP v1 001, 2PB12100DL v1 001, 2PB12100SR v1 001, 2PB12100DV v1 001, 2PB12100SG v1 001)

Component No.	Component	Sample No.
1	Transparent and pink coating on hull of power bank	B
2	Transparent and light blue coating on hull of power bank	B
3	Transparent and light purple coating on hull of power bank	B
4	Transparent and dark brown coating on hull of power bank	B
5	Transparent and reddish brown coating on hull of power bank	B
6	Transparent and dark grey coating on hull of power bank	B
7	Transparent and army green coating on hull of power bank	B
8	Transparent and dark blue coating on hull of power bank	B
9	Transparent and pearl pink coating on wrap and button of power bank	B
10	Transparent and pearl light blue coating on wrap and button of power bank	B
11	Transparent and pearl light purple coating on wrap and button of power bank	B
12	Transparent and pearl dark brown coating on wrap and button of power bank	B
13	Transparent and pearl reddish brown coating on wrap of power bank	B
14	Transparent and pearl dark grey coating on wrap and button of power bank	B
15	Transparent and pearl army green coating on wrap of power bank	B
16	Transparent and pearl dark blue coating on wrap and button of power bank	B
17	White plastic hull, wrap and button of power bank	B
18	Pink soft plastic sheet on wrap	B
19	Light blue soft plastic sheet on wrap	B
20	Light purple soft plastic sheet on wrap	B
21	Black plastic hull, wrap and button of power bank	B

TO BE CONTINUED

Component No.	Component	Sample No.
22	Dark brown soft plastic sheet on wrap	B
23	Reddish brown soft plastic sheet on wrap	B
24	Dark grey soft plastic sheet on wrap	B
25	Arm green soft plastic sheet on wrap	B
26	Dark blue soft plastic sheet on wrap	B
27	Silvery metal screw	B
28	Green PCB with chip LED of power bank(plastic/metal/coating)	B
29	Silvery metal sheet of J3 on PCB	B
30	Silvery metal pin of J3	B
31	Matt black plastic sheet of J1 & J3	B
32	Silvery metal sheet of J1 on PCB	B
33	Silvery metal pin of J1	B
34	Black plastic stick of SW on PCB	B
35	Off-white plastic base of SW	B
36	Silvery metal sheet of SW1	B
37	Silvery metal pin of SW	B
38	Yellow glue on PCB	B
40	Dark brown C4, C10-C12 on PCB on PCB(ceramic/metal)	B
43	Brown C6-C8 on PCB on PCB(ceramic/metal)	B
44	Grey L1 on PCB on PCB(ceramic/metal)	B
46	Black and white R1 on PCB on PCB(ceramic/metal)	B
47	Silvery metal soldering tin	B
48	Black foam/glue inside of power bank	B
49	Red soft plastic wire	B
50	Black soft plastic wire	B
51	Silvery metal wire core	B
52	Red metal wire inside of power bank	B
53	Transparent yellow plastic/glue adhesive tape of battery	B
54	White paper/glue double side adhesive tape on battery	B
55	Dark green paper/glue sheet of battery	B
56	White and transparent paper/plastic sheet inside of power bank	B
58	Black U1 on PCB on PCB(ceramic/metal)	B
59	Black Q1, Q2 on PCB on PCB(ceramic/metal)	B
60	Black glue on PCB	B
61	Black U2 on PCB on PCB(ceramic/metal)	B

TO BE CONTINUED

Eurofins Testing Technology (Shenzhen) Co., Ltd.

4/F., Building 3, Building 2, Runheng Electronic Park, Liuxian 2nd Road, Xin'an Street, Bao'an District, Shenzhen, Guangdong, China
 Tel.: +86 755 8358 5700 • Fax: +86 755 8358 5701 • Email: info.hk@eurofins.com • Website: www.eurofins.com / www.pt.eurofins.com

TEST RESULT

RoHS

Test Method : (1) Screening by XRF Spectroscopy:
IEC 62321-3-1: 2013, Lead, Mercury, Cadmium, total Chromium and total Bromine by X-ray fluorescence spectrometry

(2) Wet Chemical test:
Cadmium, Lead: IEC 62321-5: 2013, determined by ICP-OES.
Mercury: IEC 62321-4: 2013/AMD1: 2017, determined by ICP-OES.
Chromium (VI): IEC 62321-7-1: 2015 and IEC 62321-7-2: 2017, determined by UV/VIS.
PBBs & PBDEs: IEC 62321-6: 2015, determined by GC-MS.

(3) DBP, BBP, DEHP and DiBP: IEC 62321-8:2017

Test Result :

Test No.	Material No.	XRF Results (mg/kg) (1)		Screening Results of PHTH (mg/kg) (2)	Wet Chemical Confirmation Result (mg/kg) (3)
1	1	Cd	BL	--	--
		Pb	BL	--	--
		Hg	BL	--	--
		Cr(VI)	BL	--	--
		PBBs	BL	--	--
		PBDEs	BL	--	--
		DBP	--	BL	--
		BBP	--	BL	--
		DEHP	--	BL	--
		DiBP	--	BL	--
2	2	Cd	BL	--	--
		Pb	BL	--	--
		Hg	BL	--	--
		Cr(VI)	BL	--	--
		PBBs	BL	--	--
		PBDEs	BL	--	--
		DBP	--	BL	--
		BBP	--	BL	--
		DEHP	--	BL	--
		DiBP	--	BL	--

TO BE CONTINUED

Eurofins Testing Technology (Shenzhen) Co., Ltd.

4/F., Building 3, Building 2, Runheng Electronic Park, Liuxian 2nd Road, Xin'an Street, Bao'an District, Shenzhen, Guangdong, China
Tel.: +86 755 8358 5700 • Fax: +86 755 8358 5701 • Email: info.hk@eurofins.com • Website: www.eurofins.com / www.pt.eurofins.com

TEST RESULT

Test No.	Material No.	XRF Results (mg/kg) (1)		Screening Results of PHTH (mg/kg) (2)	Wet Chemical Confirmation Result (mg/kg) (3)
3	3	Cd	BL	--	--
		Pb	BL	--	--
		Hg	BL	--	--
		Cr(VI)	BL	--	--
		PBBs	BL	--	--
		PBDEs	BL	--	--
		DBP	--	BL	--
		BBP	--	BL	--
		DEHP	--	BL	--
DiBP	--	BL	--		
4	4	Cd	BL	--	--
		Pb	BL	--	--
		Hg	BL	--	--
		Cr(VI)	BL	--	--
		PBBs	BL	--	--
		PBDEs	BL	--	--
		DBP	--	BL	--
		BBP	--	BL	--
		DEHP	--	BL	--
DiBP	--	BL	--		
5	5	Cd	BL	--	--
		Pb	BL	--	--
		Hg	BL	--	--
		Cr(VI)	BL	--	--
		PBBs	BL	--	--
		PBDEs	BL	--	--
		DBP	--	BL	--
		BBP	--	BL	--
		DEHP	--	BL	--
DiBP	--	BL	--		
6	6	Cd	BL	--	--
		Pb	BL	--	--
		Hg	BL	--	--
		Cr(VI)	BL	--	--
		PBBs	BL	--	--
		PBDEs	BL	--	--
		DBP	--	BL	--
		BBP	--	BL	--
		DEHP	--	BL	--
DiBP	--	BL	--		

TO BE CONTINUED

Eurofins Testing Technology (Shenzhen) Co., Ltd.

4/F., Building 3, Building 2, Runheng Electronic Park, Liuxian 2nd Road, Xin'an Street, Bao'an District, Shenzhen, Guangdong, China
 Tel.: +86 755 8358 5700 • Fax: +86 755 8358 5701 • Email: info.hk@eurofins.com • Website: www.eurofins.com / www.pt.eurofins.com

TEST RESULT

Test No.	Material No.	XRF Results (mg/kg) (1)		Screening Results of PHTH (mg/kg) (2)	Wet Chemical Confirmation Result (mg/kg) (3)
7	7	Cd	BL	--	--
		Pb	BL	--	--
		Hg	BL	--	--
		Cr(VI)	BL	--	--
		PBBs	BL	--	--
		PBDEs	BL	--	--
		DBP	--	BL	--
		BBP	--	BL	--
		DEHP	--	BL	--
8	8	DIBP	--	BL	--
		Cd	BL	--	--
		Pb	BL	--	--
		Hg	BL	--	--
		Cr(VI)	BL	--	--
		PBBs	BL	--	--
		PBDEs	BL	--	--
		DBP	--	BL	--
		BBP	--	BL	--
9	9	DEHP	--	BL	--
		DIBP	--	BL	--
		Cd	BL	--	--
		Pb	BL	--	--
		Hg	BL	--	--
		Cr(VI)	BL	--	--
		PBBs	BL	--	--
		PBDEs	BL	--	--
		DBP	--	BL	--
10	10	BBP	--	BL	--
		DEHP	--	BL	--
		DIBP	--	BL	--
		Cd	BL	--	--
		Pb	BL	--	--
		Hg	BL	--	--
		Cr(VI)	BL	--	--
		PBBs	BL	--	--
		PBDEs	BL	--	--

TO BE CONTINUED

Eurofins Testing Technology (Shenzhen) Co., Ltd.

4/F., Building 3, Building 2, Runheng Electronic Park, Liuxian 2nd Road, Xin'an Street, Bao'an District, Shenzhen, Guangdong, China
 Tel.: +86 755 8358 5700 • Fax: +86 755 8358 5701 • Email: info.hk@eurofins.com • Website: www.eurofins.com / www.pt.eurofins.com

TEST RESULT

Test No.	Material No.	XRF Results (mg/kg) (1)		Screening Results of PHTH (mg/kg) (2)	Wet Chemical Confirmation Result (mg/kg) (3)
11	11	Cd	BL	--	--
		Pb	BL	--	--
		Hg	BL	--	--
		Cr(VI)	BL	--	--
		PBBs	BL	--	--
		PBDEs	BL	--	--
		DBP	--	BL	--
		BBP	--	BL	--
		DEHP	--	BL	--
12	12	DIBP	--	BL	--
		Cd	BL	--	--
		Pb	BL	--	--
		Hg	BL	--	--
		Cr(VI)	BL	--	--
		PBBs	BL	--	--
		PBDEs	BL	--	--
		DBP	--	BL	--
		BBP	--	BL	--
13	13	DEHP	--	BL	--
		DIBP	--	BL	--
		Cd	BL	--	--
		Pb	BL	--	--
		Hg	BL	--	--
		Cr(VI)	BL	--	--
		PBBs	BL	--	--
		PBDEs	BL	--	--
		DBP	--	BL	--
14	14	BBP	--	BL	--
		DEHP	--	BL	--
		DIBP	--	BL	--
		Cd	BL	--	--
		Pb	BL	--	--
		Hg	BL	--	--
		Cr(VI)	BL	--	--
		PBBs	BL	--	--
		PBDEs	BL	--	--
DBP	--	BL	--		
BBP	--	BL	--		
DEHP	--	BL	--		
DIBP	--	BL	--		

TO BE CONTINUED

Eurofins Testing Technology (Shenzhen) Co., Ltd.

4/F., Building 3, Building 2, Runheng Electronic Park, Liuxian 2nd Road, Xin'an Street, Bao'an District, Shenzhen, Guangdong, China
 Tel.: +86 755 8358 5700 • Fax: +86 755 8358 5701 • Email: info.hk@eurofins.com • Website: www.eurofins.com / www.pt.eurofins.com

TEST RESULT

Test No.	Material No.	XRF Results (mg/kg) (1)		Screening Results of PHTH (mg/kg) (2)	Wet Chemical Confirmation Result (mg/kg) (3)
15	15	Cd	BL	--	--
		Pb	BL	--	--
		Hg	BL	--	--
		Cr(VI)	BL	--	--
		PBBs	BL	--	--
		PBDEs	BL	--	--
		DBP	--	BL	--
		BBP	--	BL	--
		DEHP	--	BL	--
16	16	DIBP	--	BL	--
		Cd	BL	--	--
		Pb	BL	--	--
		Hg	BL	--	--
		Cr(VI)	BL	--	--
		PBBs	BL	--	--
		PBDEs	BL	--	--
		DBP	--	BL	--
		BBP	--	BL	--
17	17	DEHP	--	BL	--
		DIBP	--	BL	--
		Cd	BL	--	--
		Pb	BL	--	--
		Hg	BL	--	--
		Cr(VI)	BL	--	--
		PBBs	BL	--	--
		PBDEs	BL	--	--
		DBP	--	BL	--
18	18	BBP	--	BL	--
		Cd	BL	--	--
		Pb	BL	--	--
		Hg	BL	--	--
		Cr(VI)	BL	--	--
		PBBs	BL	--	--
		PBDEs	BL	--	--
		DBP	--	BL	--
		BBP	--	BL	--
18	18	DEHP	--	BL	--
		DIBP	--	BL	--
		DIBP	--	BL	--

TO BE CONTINUED

Eurofins Testing Technology (Shenzhen) Co., Ltd.

4/F., Building 3, Building 2, Runheng Electronic Park, Liuxian 2nd Road, Xin'an Street, Bao'an District, Shenzhen, Guangdong, China
 Tel.: +86 755 8358 5700 • Fax: +86 755 8358 5701 • Email: info.hk@eurofins.com • Website: www.eurofins.com / www.pt.eurofins.com

TEST RESULT

Test No.	Material No.	XRF Results (mg/kg) (1)		Screening Results of PHTH (mg/kg) (2)	Wet Chemical Confirmation Result (mg/kg) (3)
19	19	Cd	BL	--	--
		Pb	BL	--	--
		Hg	BL	--	--
		Cr(VI)	BL	--	--
		PBBs	BL	--	--
		PBDEs	BL	--	--
		DBP	--	BL	--
		BBP	--	BL	--
		DEHP	--	BL	--
DiBP	--	BL	--		
20	20	Cd	BL	--	--
		Pb	BL	--	--
		Hg	BL	--	--
		Cr(VI)	BL	--	--
		PBBs	BL	--	--
		PBDEs	BL	--	--
		DBP	--	BL	--
		BBP	--	BL	--
		DEHP	--	BL	--
DiBP	--	BL	--		
21	21	Cd	BL	--	--
		Pb	BL	--	--
		Hg	BL	--	--
		Cr(VI)	BL	--	--
		PBBs	BL	--	--
		PBDEs	BL	--	--
		DBP	--	BL	--
		BBP	--	BL	--
		DEHP	--	BL	--
DiBP	--	BL	--		
22	22	Cd	BL	--	--
		Pb	BL	--	--
		Hg	BL	--	--
		Cr(VI)	BL	--	--
		PBBs	BL	--	--
		PBDEs	BL	--	--
		DBP	--	BL	--
		BBP	--	BL	--
		DEHP	--	BL	--
DiBP	--	BL	--		

TO BE CONTINUED

Eurofins Testing Technology (Shenzhen) Co., Ltd.

4/F., Building 3, Building 2, Runheng Electronic Park, Liuxian 2nd Road, Xin'an Street, Bao'an District, Shenzhen, Guangdong, China
 Tel.: +86 755 8358 5700 • Fax: +86 755 8358 5701 • Email: info.hk@eurofins.com • Website: www.eurofins.com / www.pt.eurofins.com

TEST RESULT

Test No.	Material No.	XRF Results (mg/kg) (1)		Screening Results of PHTH (mg/kg) (2)	Wet Chemical Confirmation Result (mg/kg) (3)
23	23	Cd	BL	--	--
		Pb	BL	--	--
		Hg	BL	--	--
		Cr(VI)	BL	--	--
		PBBs	BL	--	--
		PBDEs	BL	--	--
		DBP	--	BL	--
		BBP	--	BL	--
		DEHP	--	BL	--
24	24	DIBP	--	BL	--
		Cd	BL	--	--
		Pb	BL	--	--
		Hg	BL	--	--
		Cr(VI)	BL	--	--
		PBBs	BL	--	--
		PBDEs	BL	--	--
		DBP	--	BL	--
		BBP	--	BL	--
25	25	DEHP	--	BL	--
		DIBP	--	BL	--
		Cd	BL	--	--
		Pb	BL	--	--
		Hg	BL	--	--
		Cr(VI)	BL	--	--
		PBBs	BL	--	--
		PBDEs	BL	--	--
		DBP	--	BL	--
26	26	BBP	--	BL	--
		DEHP	--	BL	--
		DIBP	--	BL	--
		Cd	BL	--	--
		Pb	BL	--	--
		Hg	BL	--	--
		Cr(VI)	BL	--	--
		PBBs	BL	--	--
		PBDEs	BL	--	--
DBP	--	BL	--		
BBP	--	BL	--		
DEHP	--	BL	--		
DIBP	--	BL	--		

TO BE CONTINUED

Eurofins Testing Technology (Shenzhen) Co., Ltd.

4/F., Building 3, Building 2, Runheng Electronic Park, Liuxian 2nd Road, Xin'an Street, Bao'an District, Shenzhen, Guangdong, China
 Tel.: +86 755 8358 5700 • Fax: +86 755 8358 5701 • Email: info.hk@eurofins.com • Website: www.eurofins.com / www.pt.eurofins.com

TEST RESULT

Test No.	Material No.	XRF Results (mg/kg) (1)		Screening Results of PHTH (mg/kg) (2)	Wet Chemical Confirmation Result (mg/kg) (3)
27	27	Cd	BL	--	--
		Pb	BL	--	--
		Hg	BL	--	--
		Cr(VI)	BL	--	--
		PBBs	NA	--	--
		PBDEs	NA	--	--
		DBP	--	NA	--
		BBP	--	NA	--
		DEHP	--	NA	--
DiBP	--	NA	--		
28	28	Cd	BL	--	--
		Pb	BL	--	--
		Hg	BL	--	--
		Cr(VI)	BL	--	--
		PBBs	IN	--	N.D.
		PBDEs	IN	--	N.D.
		DBP	--	BL	--
		BBP	--	BL	--
		DEHP	--	BL	--
DiBP	--	BL	--		
29	29	Cd	BL	--	--
		Pb	BL	--	--
		Hg	BL	--	--
		Cr(VI)	BL	--	--
		PBBs	NA	--	--
		PBDEs	NA	--	--
		DBP	--	NA	--
		BBP	--	NA	--
		DEHP	--	NA	--
DiBP	--	NA	--		
30	30	Cd	BL	--	--
		Pb	BL	--	--
		Hg	BL	--	--
		Cr(VI)	BL	--	--
		PBBs	NA	--	--
		PBDEs	NA	--	--
		DBP	--	NA	--
		BBP	--	NA	--
		DEHP	--	NA	--
DiBP	--	NA	--		

TO BE CONTINUED

Eurofins Testing Technology (Shenzhen) Co., Ltd.

4/F., Building 3, Building 2, Runheng Electronic Park, Liuxian 2nd Road, Xin'an Street, Bao'an District, Shenzhen, Guangdong, China
 Tel.: +86 755 8358 5700 • Fax: +86 755 8358 5701 • Email: info.hk@eurofins.com • Website: www.eurofins.com / www.pt.eurofins.com

TEST RESULT

Test No.	Material No.	XRF Results (mg/kg) (1)		Screening Results of PHTH (mg/kg) (2)	Wet Chemical Confirmation Result (mg/kg) (3)
31	31	Cd	BL	--	--
		Pb	BL	--	--
		Hg	BL	--	--
		Cr(VI)	BL	--	--
		PBBs	BL	--	--
		PBDEs	BL	--	--
		DBP	--	BL	--
		BBP	--	BL	--
		DEHP	--	BL	--
DiBP	--	BL	--		
32	32	Cd	BL	--	--
		Pb	BL	--	--
		Hg	BL	--	--
		Cr(VI)	IN	--	Negative
		PBBs	NA	--	--
		PBDEs	NA	--	--
		DBP	--	NA	--
		BBP	--	NA	--
		DEHP	--	NA	--
DiBP	--	NA	--		
33	33	Cd	BL	--	--
		Pb	BL	--	--
		Hg	BL	--	--
		Cr(VI)	BL	--	--
		PBBs	NA	--	--
		PBDEs	NA	--	--
		DBP	--	NA	--
		BBP	--	NA	--
		DEHP	--	NA	--
DiBP	--	NA	--		
34	34	Cd	BL	--	--
		Pb	BL	--	--
		Hg	BL	--	--
		Cr(VI)	BL	--	--
		PBBs	BL	--	--
		PBDEs	BL	--	--
		DBP	--	BL	--
		BBP	--	BL	--
		DEHP	--	BL	--
DiBP	--	BL	--		

TO BE CONTINUED

Eurofins Testing Technology (Shenzhen) Co., Ltd.

4/F., Building 3, Building 2, Runheng Electronic Park, Liuxian 2nd Road, Xin'an Street, Bao'an District, Shenzhen, Guangdong, China
 Tel.: +86 755 8358 5700 • Fax: +86 755 8358 5701 • Email: info.hk@eurofins.com • Website: www.eurofins.com / www.pt.eurofins.com

TEST RESULT

Test No.	Material No.	XRF Results (mg/kg) (1)		Screening Results of PHTH (mg/kg) (2)	Wet Chemical Confirmation Result (mg/kg) (3)
35	35	Cd	BL	--	--
		Pb	BL	--	--
		Hg	BL	--	--
		Cr(VI)	BL	--	--
		PBBs	BL	--	--
		PBDEs	BL	--	--
		DBP	--	BL	--
		BBP	--	BL	--
		DEHP	--	BL	--
DiBP	--	BL	--		
36	36	Cd	BL	--	--
		Pb	BL	--	--
		Hg	BL	--	--
		Cr(VI)	BL	--	--
		PBBs	NA	--	--
		PBDEs	NA	--	--
		DBP	--	NA	--
		BBP	--	NA	--
		DEHP	--	NA	--
DiBP	--	NA	--		
37	37	Cd	BL	--	--
		Pb	BL	--	--
		Hg	BL	--	--
		Cr(VI)	BL	--	--
		PBBs	NA	--	--
		PBDEs	NA	--	--
		DBP	--	NA	--
		BBP	--	NA	--
		DEHP	--	NA	--
DiBP	--	NA	--		
38	38	Cd	BL	--	--
		Pb	BL	--	--
		Hg	BL	--	--
		Cr(VI)	BL	--	--
		PBBs	BL	--	--
		PBDEs	BL	--	--
		DBP	--	BL	--
		BBP	--	BL	--
		DEHP	--	BL	--
DiBP	--	BL	--		

TO BE CONTINUED

Eurofins Testing Technology (Shenzhen) Co., Ltd.

4/F., Building 3, Building 2, Runheng Electronic Park, Liuxian 2nd Road, Xin'an Street, Bao'an District, Shenzhen, Guangdong, China
 Tel.: +86 755 8358 5700 • Fax: +86 755 8358 5701 • Email: info.hk@eurofins.com • Website: www.eurofins.com / www.pt.eurofins.com

TEST RESULT

Test No.	Material No.	XRF Results (mg/kg) (1)		Screening Results of PHTH (mg/kg) (2)	Wet Chemical Confirmation Result (mg/kg) (3)
39	58	Cd	BL	--	--
		Pb	BL	--	--
		Hg	BL	--	--
		Cr(VI)	BL	--	--
		PBBs	NA	--	--
		PBDEs	NA	--	--
		DBP	--	NA	--
		BBP	--	NA	--
		DEHP	--	NA	--
DiBP	--	NA	--		
40	40	Cd	BL	--	--
		Pb	BL	--	--
		Hg	BL	--	--
		Cr(VI)	BL	--	--
		PBBs	NA	--	--
		PBDEs	NA	--	--
		DBP	--	NA	--
		BBP	--	NA	--
		DEHP	--	NA	--
DiBP	--	NA	--		
41	59	Cd	BL	--	--
		Pb	BL	--	--
		Hg	BL	--	--
		Cr(VI)	BL	--	--
		PBBs	NA	--	--
		PBDEs	NA	--	--
		DBP	--	NA	--
		BBP	--	NA	--
		DEHP	--	NA	--
DiBP	--	NA	--		
42	60	Cd	BL	--	--
		Pb	BL	--	--
		Hg	BL	--	--
		Cr(VI)	IN	--	N.D.
		PBBs	BL	--	--
		PBDEs	BL	--	--
		DBP	--	BL	--
		BBP	--	BL	--
		DEHP	--	BL	--
DiBP	--	BL	--		

TO BE CONTINUED

Eurofins Testing Technology (Shenzhen) Co., Ltd.

4/F., Building 3, Building 2, Runheng Electronic Park, Liuxian 2nd Road, Xin'an Street, Bao'an District, Shenzhen, Guangdong, China
 Tel.: +86 755 8358 5700 • Fax: +86 755 8358 5701 • Email: info.hk@eurofins.com • Website: www.eurofins.com / www.pt.eurofins.com

TEST RESULT

Test No.	Material No.	XRF Results (mg/kg) (1)		Screening Results of PHTH (mg/kg) (2)	Wet Chemical Confirmation Result (mg/kg) (3)
43	43	Cd	BL	--	--
		Pb	BL	--	--
		Hg	BL	--	--
		Cr(VI)	BL	--	--
		PBBs	NA	--	--
		PBDEs	NA	--	--
		DBP	--	NA	--
		BBP	--	NA	--
		DEHP	--	NA	--
DiBP	--	NA	--		
44	44	Cd	BL	--	--
		Pb	BL	--	--
		Hg	BL	--	--
		Cr(VI)	IN	--	N.D.
		PBBs	NA	--	--
		PBDEs	NA	--	--
		DBP	--	NA	--
		BBP	--	NA	--
		DEHP	--	NA	--
DiBP	--	NA	--		
45	61	Cd	BL	--	--
		Pb	BL	--	--
		Hg	BL	--	--
		Cr(VI)	BL	--	--
		PBBs	BL	--	--
		PBDEs	BL	--	--
		DBP	--	BL	--
		BBP	--	BL	--
		DEHP	--	BL	--
DiBP	--	BL	--		
46	46	Cd	BL	--	--
		Pb	BL	--	--
		Hg	BL	--	--
		Cr(VI)	IN	--	N.D.
		PBBs	NA	--	--
		PBDEs	NA	--	--
		DBP	--	NA	--
		BBP	--	NA	--
		DEHP	--	NA	--
DiBP	--	NA	--		

TO BE CONTINUED

Eurofins Testing Technology (Shenzhen) Co., Ltd.

4/F., Building 3, Building 2, Runheng Electronic Park, Liuxian 2nd Road, Xin'an Street, Bao'an District, Shenzhen, Guangdong, China
 Tel.: +86 755 8358 5700 • Fax: +86 755 8358 5701 • Email: info.hk@eurofins.com • Website: www.eurofins.com / www.pt.eurofins.com

TEST RESULT

Test No.	Material No.	XRF Results (mg/kg) (1)		Screening Results of PHTH (mg/kg) (2)	Wet Chemical Confirmation Result (mg/kg) (3)
47	47	Cd	BL	--	--
		Pb	BL	--	--
		Hg	BL	--	--
		Cr(VI)	BL	--	--
		PBBs	NA	--	--
		PBDEs	NA	--	--
		DBP	--	NA	--
		BBP	--	NA	--
		DEHP	--	NA	--
DiBP	--	NA	--		
48	48	Cd	BL	--	--
		Pb	BL	--	--
		Hg	BL	--	--
		Cr(VI)	BL	--	--
		PBBs	BL	--	--
		PBDEs	BL	--	--
		DBP	--	BL	--
		BBP	--	BL	--
		DEHP	--	BL	--
DiBP	--	BL	--		
49	49	Cd	BL	--	--
		Pb	BL	--	--
		Hg	BL	--	--
		Cr(VI)	BL	--	--
		PBBs	BL	--	--
		PBDEs	BL	--	--
		DBP	--	BL	--
		BBP	--	BL	--
		DEHP	--	BL	--
DiBP	--	BL	--		
50	50	Cd	BL	--	--
		Pb	BL	--	--
		Hg	BL	--	--
		Cr(VI)	BL	--	--
		PBBs	BL	--	--
		PBDEs	BL	--	--
		DBP	--	BL	--
		BBP	--	BL	--
		DEHP	--	BL	--
DiBP	--	BL	--		

TO BE CONTINUED

Eurofins Testing Technology (Shenzhen) Co., Ltd.

4/F., Building 3, Building 2, Runheng Electronic Park, Liuxian 2nd Road, Xin'an Street, Bao'an District, Shenzhen, Guangdong, China
 Tel.: +86 755 8358 5700 • Fax: +86 755 8358 5701 • Email: info.hk@eurofins.com • Website: www.eurofins.com / www.pt.eurofins.com

TEST RESULT

Test No.	Material No.	XRF Results (mg/kg) (1)		Screening Results of PHTH (mg/kg) (2)	Wet Chemical Confirmation Result (mg/kg) (3)
51	51	Cd	BL	--	--
		Pb	BL	--	--
		Hg	BL	--	--
		Cr(VI)	BL	--	--
		PBBs	NA	--	--
		PBDEs	NA	--	--
		DBP	--	NA	--
		BBP	--	NA	--
		DEHP	--	NA	--
DiBP	--	NA	--		
52	52	Cd	BL	--	--
		Pb	BL	--	--
		Hg	BL	--	--
		Cr(VI)	BL	--	--
		PBBs	NA	--	--
		PBDEs	NA	--	--
		DBP	--	NA	--
		BBP	--	NA	--
		DEHP	--	NA	--
DiBP	--	NA	--		
53	53	Cd	BL	--	--
		Pb	BL	--	--
		Hg	BL	--	--
		Cr(VI)	BL	--	--
		PBBs	BL	--	--
		PBDEs	BL	--	--
		DBP	--	BL	--
		BBP	--	BL	--
		DEHP	--	BL	--
DiBP	--	BL	--		
54	54	Cd	BL	--	--
		Pb	BL	--	--
		Hg	BL	--	--
		Cr(VI)	BL	--	--
		PBBs	BL	--	--
		PBDEs	BL	--	--
		DBP	--	BL	--
		BBP	--	BL	--
		DEHP	--	BL	--
DiBP	--	BL	--		

TO BE CONTINUED

Eurofins Testing Technology (Shenzhen) Co., Ltd.

4/F., Building 3, Building 2, Runheng Electronic Park, Liuxian 2nd Road, Xin'an Street, Bao'an District, Shenzhen, Guangdong, China
 Tel.: +86 755 8358 5700 • Fax: +86 755 8358 5701 • Email: info.hk@eurofins.com • Website: www.eurofins.com / www.pt.eurofins.com

TEST RESULT

Test No.	Material No.	XRF Results (mg/kg) (1)		Screening Results of PHTH (mg/kg) (2)	Wet Chemical Confirmation Result (mg/kg) (3)
55	55	Cd	BL	--	--
		Pb	BL	--	--
		Hg	BL	--	--
		Cr(VI)	BL	--	--
		PBBs	BL	--	--
		PBDEs	BL	--	--
		DBP	--	BL	--
		BBP	--	BL	--
		DEHP	--	BL	--
		DiBP	--	BL	--
56	56	Cd	BL	--	--
		Pb	BL	--	--
		Hg	BL	--	--
		Cr(VI)	BL	--	--
		PBBs	BL	--	--
		PBDEs	BL	--	--
		DBP	--	BL	--
		BBP	--	BL	--
		DEHP	--	BL	--
		DiBP	--	BL	--
DiBP	--	NA	--		

TO BE CONTINUED

Eurofins Testing Technology (Shenzhen) Co., Ltd.

4/F., Building 3, Building 2, Runheng Electronic Park, Liuxian 2nd Road, Xin'an Street, Bao'an District, Shenzhen, Guangdong, China
 Tel.: +86 755 8358 5700 • Fax: +86 755 8358 5701 • Email: info.hk@eurofins.com • Website: www.eurofins.com / www.pt.eurofins.com

TEST RESULT

Remark:

(1) (a) It is the result on total Br while test item on restricted substances is PBBs/PBDEs. It is the result on total Cr while test item on restricted substances is Cr(VI).

(b) Results are obtained by EDXRF for primary screening, and further chemical testing by ICP (for Cd, Pb, Hg), UV-VIS (for Cr(VI)) and GC/MS (for PBBs, PBDEs) is recommended to be performed, if the concentration exceeds the below warning value according to IEC62321.

XRF Screening Limits in mg/kg for Regulated Elements in Various Matrices:

Element	Polymer Materials	Metallic Materials	Composite Materials
Cd	$BL \leq (70-3\sigma) < X < (130+3\sigma) \leq OL$	$BL \leq (70-3\sigma) < X < (130+3\sigma) \leq OL$	$LOD < X < (150+3\sigma) \leq OL$
Pb	$BL \leq (700-3\sigma) < X < (1300+3\sigma) \leq OL$	$BL \leq (700-3\sigma) < X < (1300+3\sigma) \leq OL$	$BL \leq (500-3\sigma) < X < (1500+3\sigma) \leq OL$
Hg	$BL \leq (700-3\sigma) < X < (1300+3\sigma) \leq OL$	$BL \leq (700-3\sigma) < X < (1300+3\sigma) \leq OL$	$BL \leq (500-3\sigma) < X < (1500+3\sigma) \leq OL$
Cr	$BL \leq (700-3\sigma) < X$	$BL \leq (700-3\sigma) < X$	$BL \leq (500-3\sigma) < X$
Br	$BL \leq (300-3\sigma) < X$	-	$BL \leq (250-3\sigma) < X$

(c) The XRF screening test for ROHS elements – The reading may be different to the actual content in the sample be of non-uniformity composition.

Note: BL= Below Limit
 OL= Over Limit
 IN = Inconclusive
 LOD = Limit of Detection
 N.D. = Not Detected (<MDL)
 NA = Not Applicable
 - = Not Regulated
 -- = Not Conducted
 mg/kg = milligram per kilogram = ppm = 0.0001%

(2) Screening results of PHTH are for primary screening, and further chemical testing by GC-MS (for DBP, BBP, DEHP and DiBP) are recommended to be performed if the concentration exceeds the below warning value (unit: mg/kg)

Compound	Polymer Materials
DBP	$BL \leq 600 < X$
BBP	$BL \leq 600 < X$
DEHP	$BL \leq 600 < X$
DiBP	$BL \leq 600 < X$

(3) (a) Unit and Method Detected Limit (MDL) in wet chemical test.

Testing Item	Detection Limit
Cadmium, Lead & Mercury	10 mg/kg
Chromium (VI)	10 mg/kg
Polybrominated Biphenyls (PBBs) & Polybrominated Diphenyl Ethers (PBDEs)	10 [^] mg/kg
Dibutylphthalate (DBP)	50 mg/kg
Benzylbutylphthalate (BBP)	50 mg/kg
Diethylhexylphthalate (DEHP)	50 mg/kg
Diisobutyl phthalate (DiBP)	50 mg/kg

TO BE CONTINUED

Eurofins Testing Technology (Shenzhen) Co., Ltd.

4/F., Building 3, Building 2, Runheng Electronic Park, Liuxian 2nd Road, Xin'an Street, Bao'an District, Shenzhen, Guangdong, China
 Tel.: +86 755 8358 5700 • Fax: +86 755 8358 5701 • Email: info.hk@eurofins.com • Website: www.eurofins.com / www.pt.eurofins.com

TEST RESULT

^ The MDL for single compound of PBBs and PBDEs.

(b) According to IEC 62321, result on Cr(VI) for metal sample is shown as Positive/Negative.

Negative = Absence of Cr(VI) coating.

Positive = Presence of Cr(VI) coating.

(4) RoHS Requirement:

Restricted Substances	Limits [^]
Cadmium (Cd)	0.01% (100 mg/kg)
Lead (Pb)	0.1% (1000 mg/kg)
Mercury (Hg)	0.1% (1000 mg/kg)
Chromium (VI) (Cr VI)	0.1% (1000 mg/kg)
Polybrominated Biphenyls (PBBs)	0.1% (1000 mg/kg)
Polybrominated Diphenyl Ethers (PBDEs)	0.1% (1000 mg/kg)
Dibutylphthalate (DBP)	0.1% (1000 mg/kg)
Benzylbutylphthalate (BBP)	0.1% (1000 mg/kg)
Diethylhexylphthalate (DEHP)	0.1% (1000 mg/kg)
Diisobutyl phthalate (DiBP)	0.1% (1000 mg/kg)

[^]The above limits were quoted from 2011/65/EU and its amendment Directive (EU) 2015/863 for homogeneous material.

Other Information / Remark:

N/A

END OF THE REPORT

Eurofins Testing Technology (Shenzhen) Co., Ltd.

4/F., Building 3, Building 2, Runheng Electronic Park, Liuxian 2nd Road, Xin'an Street, Bao'an District, Shenzhen, Guangdong, China
Tel.: +86 755 8358 5700 • Fax: +86 755 8358 5701 • Email: info.hk@eurofins.com • Website: www.eurofins.com / www.pt.eurofins.com